

Lifting Pins

Stainless Steel, Self-Locking, with T-Handle

SPECIFICATION

Pin

Stainless steel AISI 630 NI
Precipitation-hardened

Handle

Aluminum
Anodized, black

Push button

Aluminum
Anodized, red

Spring

Stainless steel



INFORMATION

Lifting pins GN 1131 with T-handle are used for simple manual lifting and carrying of equipment and tools, for example.

Pressing the red button will release the locking balls, allowing the lifting pin to be moved in or out of the holding bore on the workpiece.

Holding bores with d_1 H11 are sufficient for safe use of the lifting pins. Holding bushings GN 1132 (see page 1098) are also available.

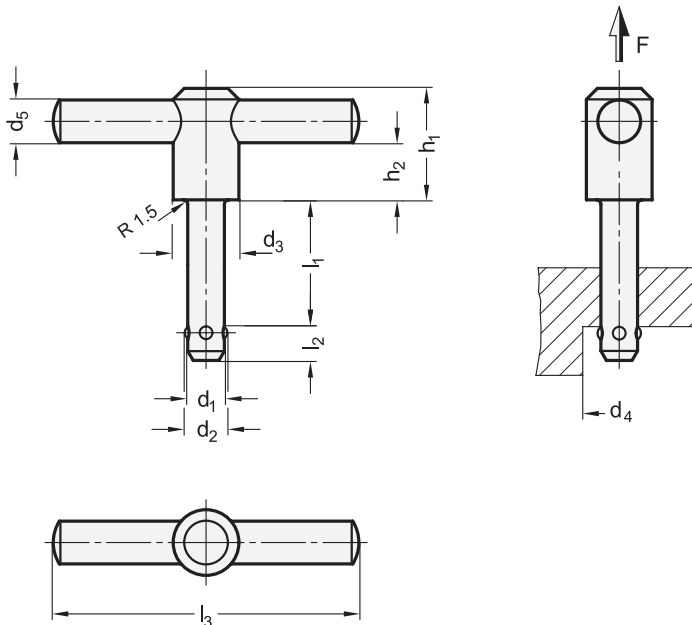
Lifting pins GN 1131 are designed exclusively for lifting, carrying and transporting with hand power and may not be used as lifting points in connection with lifting equipment or cranes.

ACCESSORY

- GN 1132 Holding Bushings (see page 1098)

TECHNICAL INFORMATION

- ISO-Fundamental Tolerances (see page A21)
- Stainless Steel Characteristics (see page A26)



GN 1131

STAINLESS STEEL

Description	d_1 -0.04/-0.08	l_1 +0.6	d_2	d_3	d_4 min.	d_5	h_1	h_2	l_2 ± 0.5	l_3	Nominal load F in N	
GN 1131-8-35-NI	8	35	9.35	21.5	9.85	14	36	18.7	8.75	100	500	141
GN 1131-10-50-NI	10	50	11.7	21.5	12.2	14	36	18.7	10.1	100	500	159
GN 1131-12-50-NI	12	50	14.2	21.5	14.7	14	36	18.7	10.9	100	500	177